



MONTHLY MEMBERSHIP PROGRESS REPORT

District 320 D

Results as of: 6/30/2017

GMT: OPEN

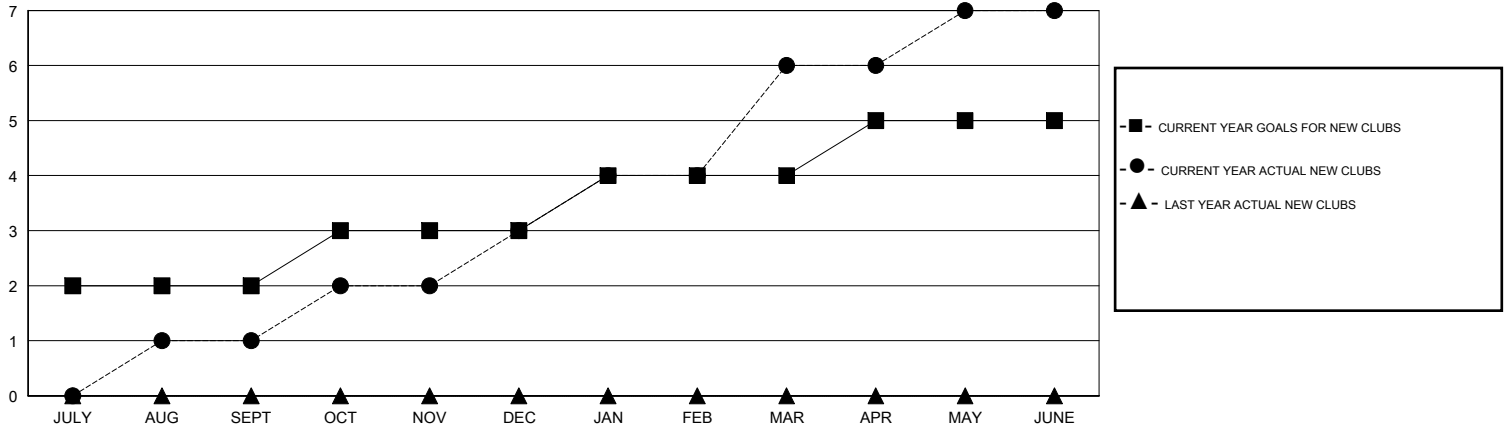
LOCATION INDIA

GMT CA

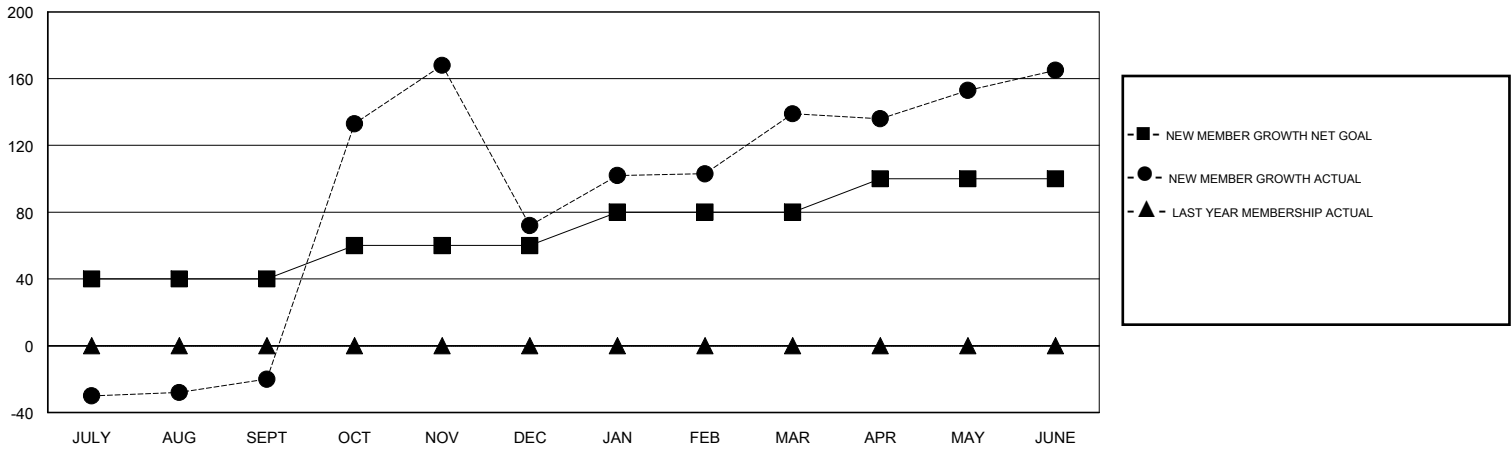
Clubs			
RESULTS FOR 2016-2017			
QUARTER	NEW CLUB GOAL	NEW CLUBS	DROPPED CLUBS
JULY/AUG/SEPT	2	1	3
OCT/NOV/DEC	1	2	3
JAN/FEB/MAR	1	3	0
APR/MAY/JUNE	1	1	1

Members			
RESULTS FOR 2016-2017			
QUARTER	NEW MEMBER GROWTH NET GOAL (not reinstated or transfers)	NEW MEMBER GROWTH ACTUAL (not reinstated or transfers)	DROPPED MEMBERS ACTUAL (including transfers)
JULY/AUG/SEPT	40	147	167
OCT/NOV/DEC	20	247	155
JAN/FEB/MAR	20	97	30
APR/MAY/JUNE	20	192	166

GOALS AND ACTUAL NEW CLUBS CUMULATIVE



GOALS AND ACTUAL MEMBERS CUMULATIVE



DROPPED CLUBS: 7	74 CLUBS OF 87 ADDED 1 OR MORE NEW MEMBERS	GENDER DISTRIBUTION
		MALE 2,421 (84.12%)
		FEMALE 457 (15.88%)
DROPPED MEMBERS	CLICK HERE FOR CUMULATIVE MEMBERSHIP DATA	TOTAL FAMILY UNIT MEMBERS 651
DECEASED 10		FAMILY MEMBERS PAYING HALF DUES 354
CLUB CANCELLED 176		
OTHER 332		
TOTAL 518		